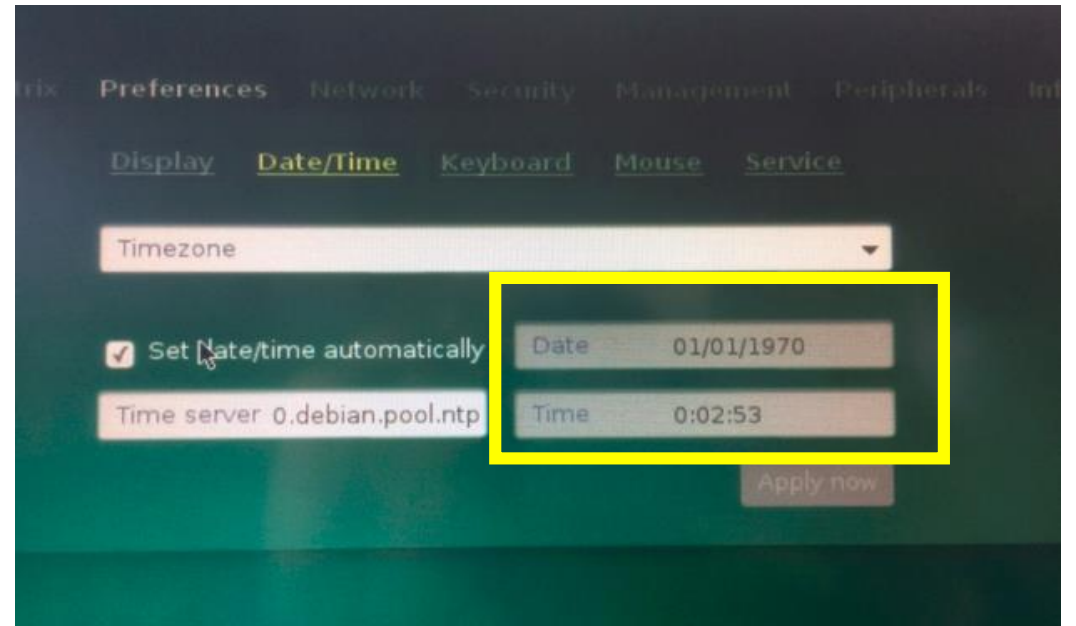
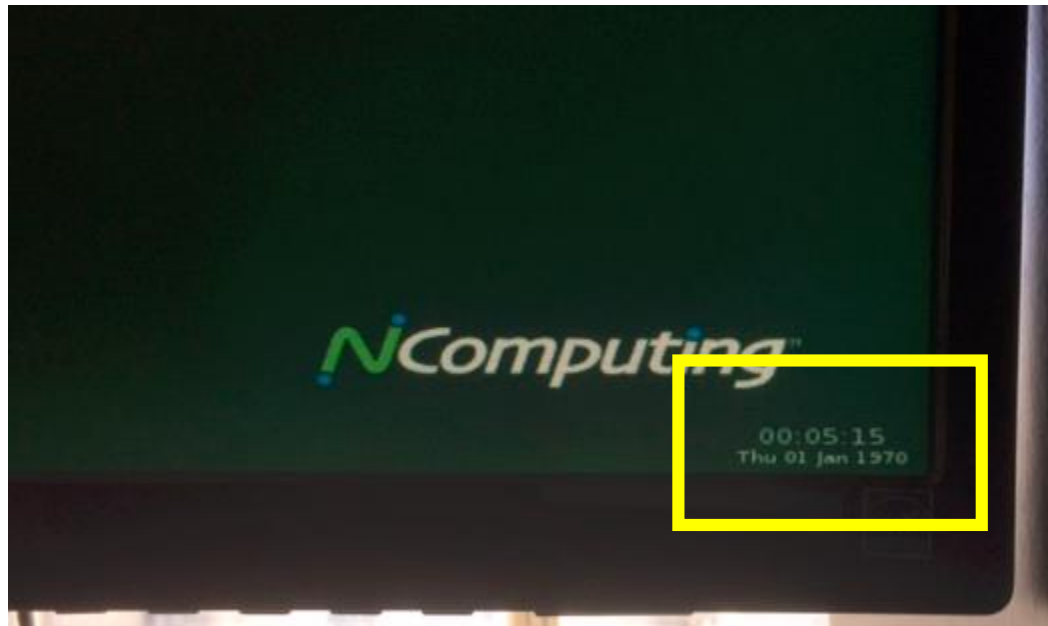


N-Series' coin battery Issue

15th November. 2016

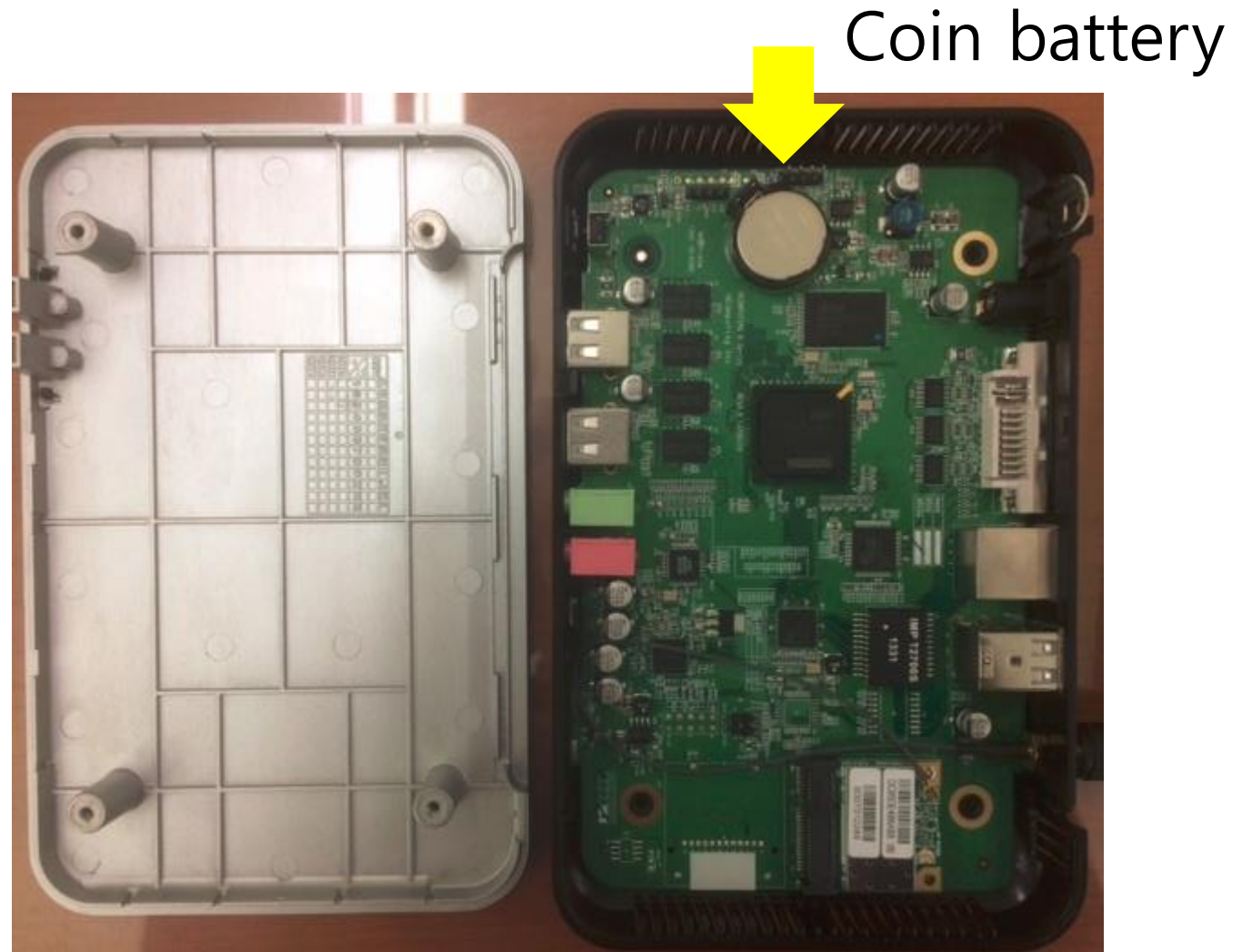
Symptoms

- After device booting, you can see "01 Jan 1970" on bottom side of monitor or can't change "time setting" in Date/Time of setup display



Action to replace "Coin battery"

- Step1 : Open case



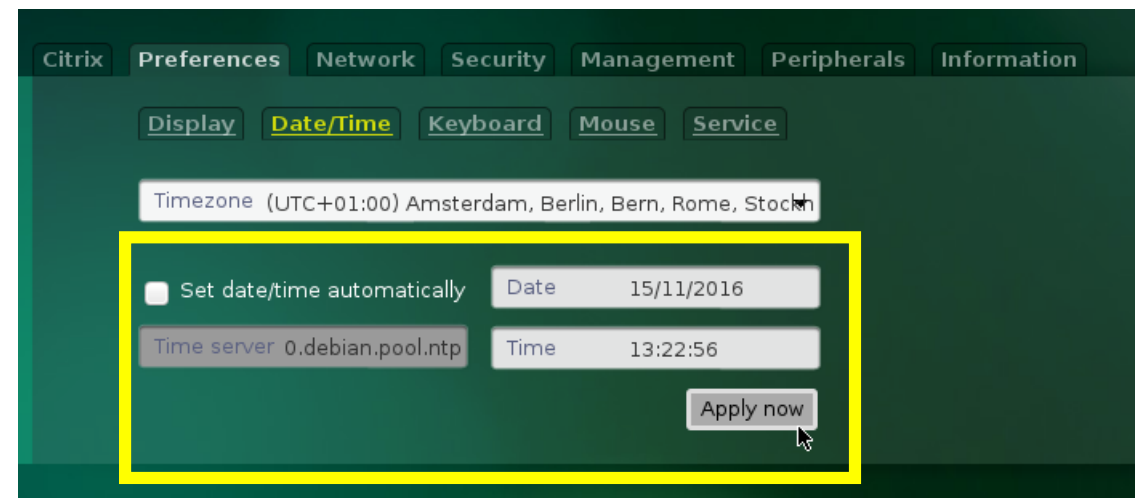
Action to replace "Coin battery"

- Step2 : remove the failed coin battery and replace to new one (Coin battery_2032 / CR2032, Coin Type Lithium Battery / Panasonic)
- Step3 : assemble case(top and bottom)



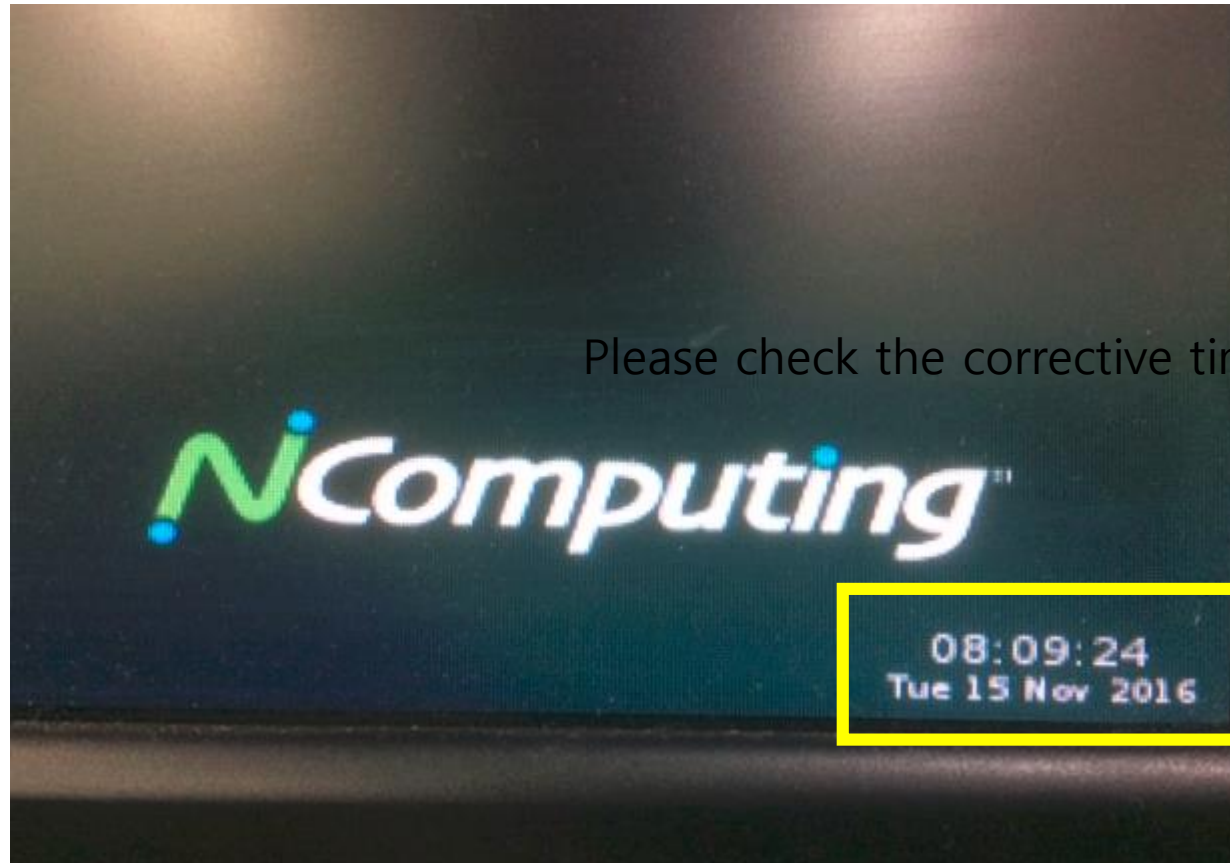
Action to replace "Coin battery"

- Step4 : after booting the device, set device time.
- Open the Setup UI, go to Preferences > Display/Time
- Uncheck the 'Set date/time automatically' check-box
- Verify the Date and Time or adjust them, if the values are wrong
- Click the 'Apply now' button
This will set the hardware clock to current system time
- Select the 'Set date/time automatically' check-box again, if necessary
- Click the 'Save' button



Action to replace "Coin battery"

- Step5 : after device time setting, power off/on and done



Please check the corrective time on bottom side of display

