

Configuring DHCP Options for Automatic N-series Configuration

This document will assist administrators in configuring their Microsoft Windows DHCP server(s) to allow the NComputing N-Series to automatically connect to XenDesktop and vSpace Management Center environments.

If you are already familiar with the administration of DHCP servers and the creation of option tags, feel free to skip to the [N-series DHCP Tags](#) section of this guide for a list of tags that the N-series supports.

For those less familiar with DHCP administration, sections 1 and 2 of this manual describe how to access the DHCP settings in Server 2003 and Server 2008 respectively.

Contents

Configuring DHCP Options for Automatic N-series Configuration.....	1
1. Accessing DHCP Settings in Windows Server 2003.....	1
2. Accessing DHCP Settings in Windows Server 2008.....	3
3. N-series DHCP Tags	4

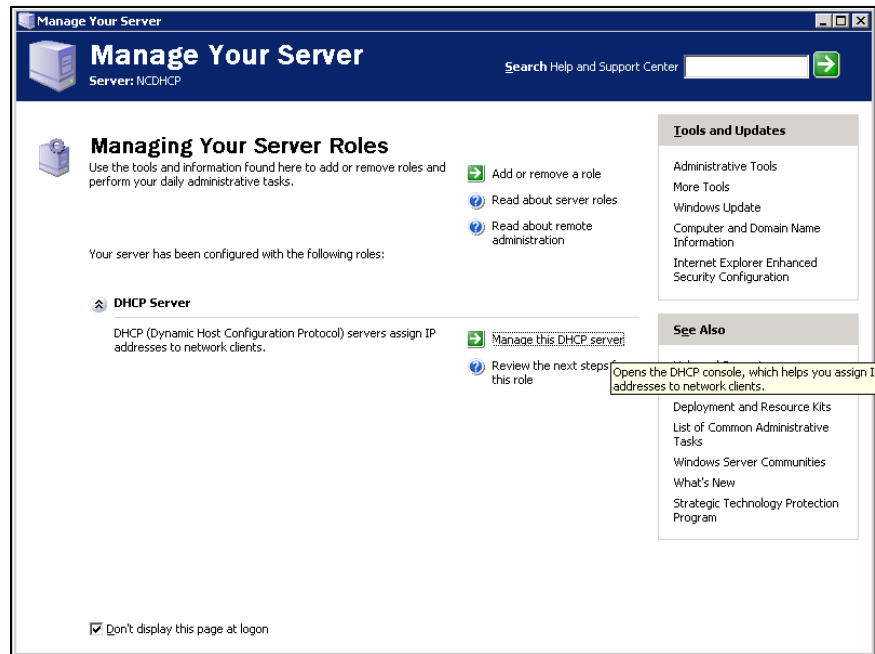
1. Accessing DHCP Settings in Windows Server 2003

From the DHCP server:

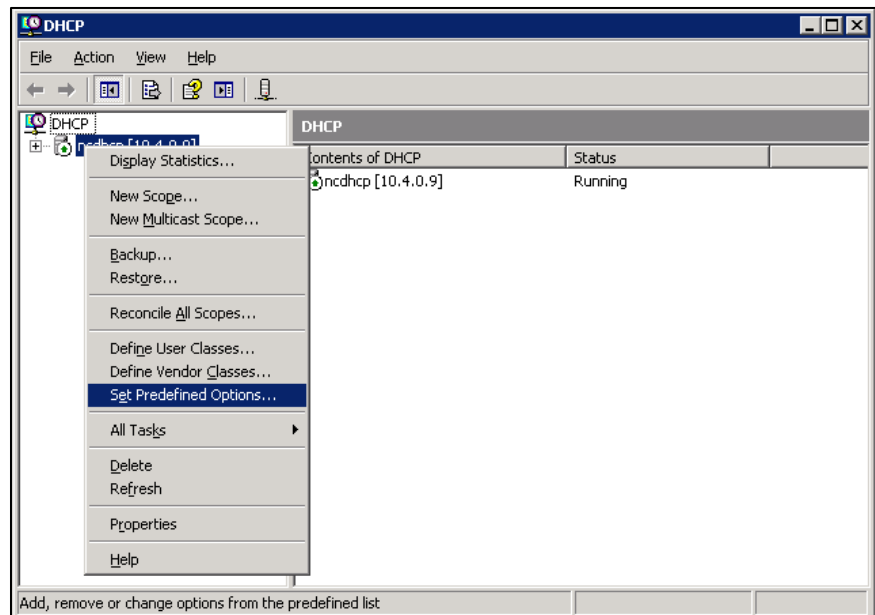
1. From the Start Menu click “Manage Your Server”



2. Click “Manage this DHCP server” as seen below:



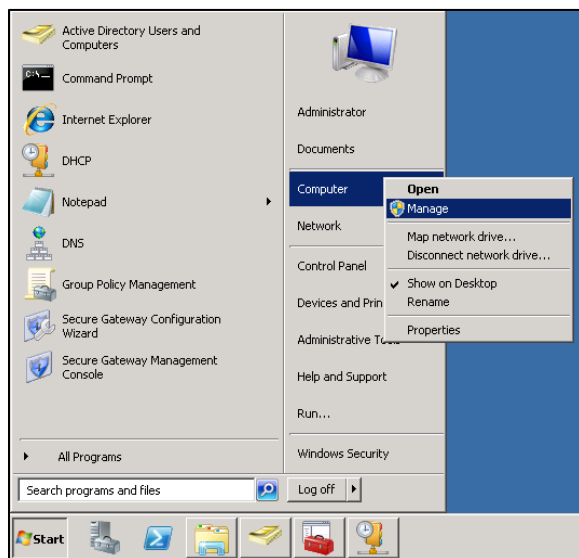
3. Select DHCP and click “Set Predefined Options” as seen below.



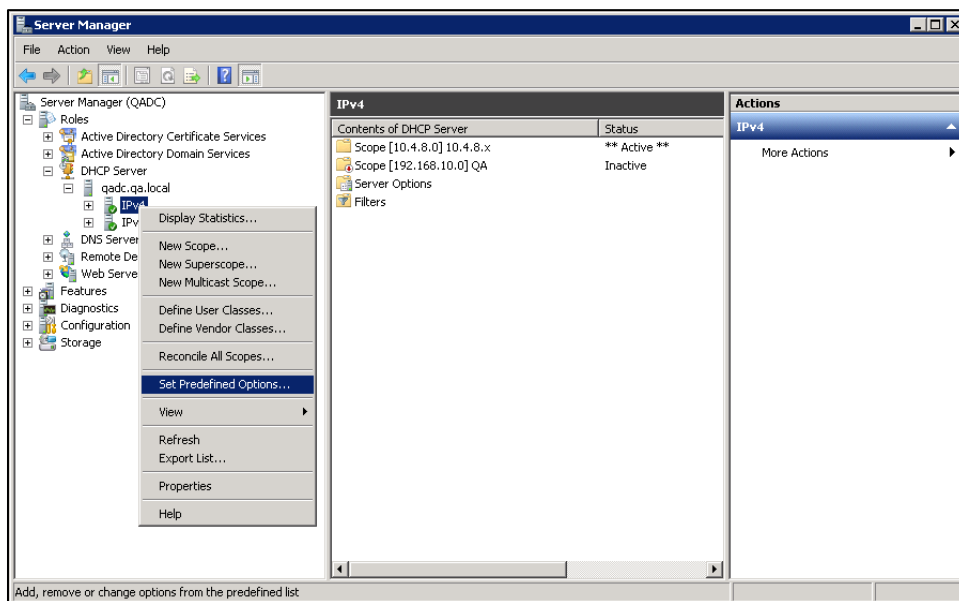
4. Proceed to the [N-series DHCP Tags](#) section of this guide for a description of available DHCP tags and instructions for adding them to your DHCP server.

2. Accessing DHCP Settings in Windows Server 2008

From the DHCP Server:



1. Right-click Computer and select “Manage”
2. From the Computer Management window, open the Roles section and then the DHCP Server section as seen below.

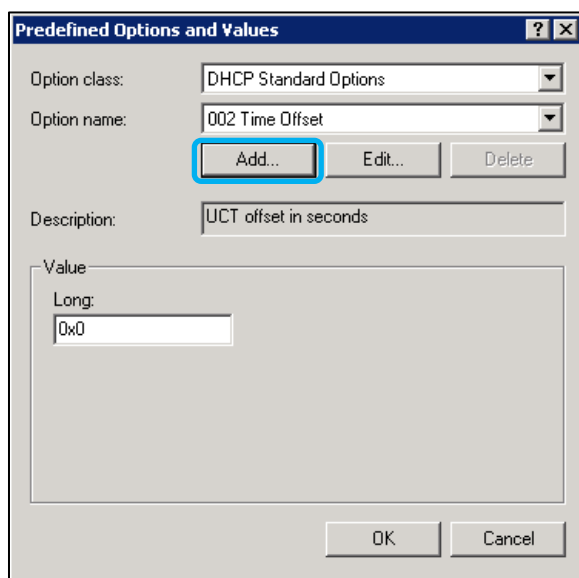


3. Open the DHCP Server Name in question, right-click on IPv4, and select “Set Predefined Options”. You are now ready to specify which DHCP tags you wish to add to your N-series environment. Each of the potential tags and their functions are explained in the next section of this guide.

3. N-series DHCP Tags

The N-series can make use of several DHCP tags and functions. This section will walk you through adding the tags and functions appropriate for your deployment.

1. From the Predefined Options and Values window, click the “Add” button.



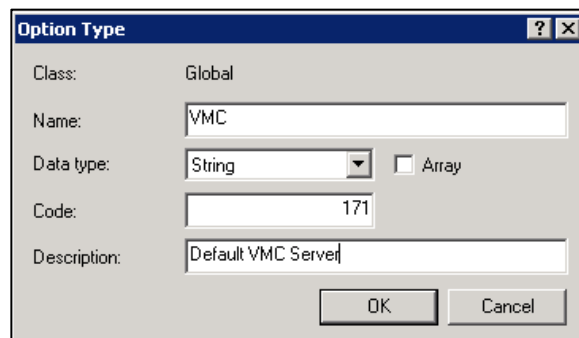
2. Select and implement your chosen tags by filling out the Name, Data type, Code, and Description fields as specified below. **Note** that the “STRING VALUE” is used later in **step 5**.

XenDesktop Tag 181		
This tag will automatically link your N-series device(s) with their designated XenDesktop server(s).	Name	XenDesktop*
	Data Type	String
	Code	181
	Description	Default XenDesktop server
	STRING VALUE	(The IP, URL, or Fully Qualified Domain Name of your XenDesktop server.)
	Notes	*We recommend you use “XenDesktop” plus the IP address or URL of your XenDesktop server to differentiate this tag from any future tags you might add.

NComputing CMF Tag 171		
<p>This tag will automatically link your N-series device(s) with their designated vSpace Management Center server.</p>	Name	VMC*
	Data Type	String
	Code	171
	Description	Default vSpace Management Center Server
	STRING VALUE	(The IP or Fully Qualified Domain Name of your vSpace Management Center server)
	Notes	*We recommend you use "VMC" plus the IP address or URL of your vSpace Management Center server to differentiate this tag from any future tags you might add.
N-series Firmware Tag 172		
<p>This tag allows you to direct your N-series devices to a server that you have created to store and distribute N-series firmware.</p> <p>Use this tag to store the firmware server's network address.</p> <p>If your firmware server requires a username and password, use tags 173 and 174 to store those details.</p>	Name	N-series Firmware URL
	Data Type	String
	Code	172
	Description	Address of firmware update server.
	STRING VALUE	(The FTP, HTTP, or HTTPS address of your firmware server.)
	Notes	If the server you are storing N-series firmware on requires a username and password, add NComputing CMF Tags 173 and 174 to store that information.
N-series Firmware Tag 173		
<p>Use this tag in conjunction with 172 to store the firmware server's username (if username and password are required).</p>	Name	N-series Firmware Username
	Data Type	String
	Code	173
	Description	Address of firmware update server.
	STRING VALUE	(The FTP, HTTP, or HTTPS address of your firmware server.)
	Notes	This tag is only required if the server you are storing N-series firmware on requires a username.

N-series Firmware Tag 174		
Use this tag in conjunction with 172 to store the firmware server's password (if username and password are required).	Name	N-series Firmware Password
	Data Type	String
	Code	174
	Description	Address of firmware update server.
	STRING VALUE	(The FTP, HTTP, or HTTPS address of your firmware server.)
	Notes	This tag is only required if the server you are storing N-series firmware on requires a password.

To the right is an example of a completed entry (in this case, the VMC 171 tag).

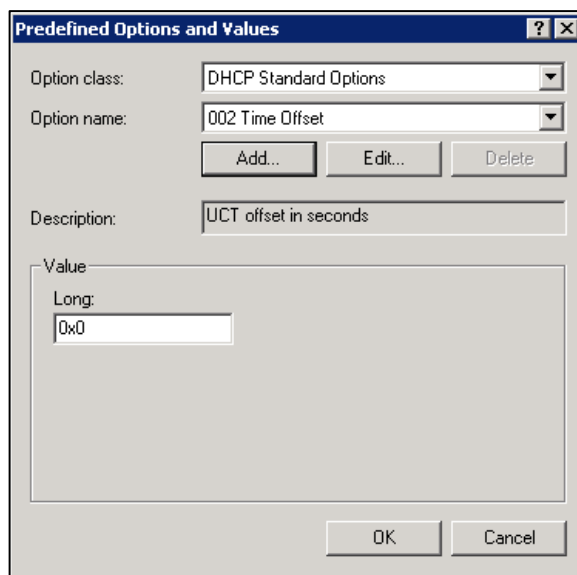


The dialog box is titled "Option Type". It contains the following fields:

- Class:** Global
- Name:** VMC
- Data type:** String (selected from a dropdown menu, with an "Array" checkbox next to it)
- Code:** 171
- Description:** Default VMC Server

Buttons at the bottom: OK, Cancel.

3. You can now verify that the tag you created has been saved by clicking on the **Option Name** drop down (see image below) and searching for the tag(s) in question.
4. Once again from the Predefined Options and Values window, select each tag and fill in the **Value** field with the string values specified earlier in **step 2**.
 - a. **Example:** For Tag 171, the string value would be the IP address or Fully Qualified Domain Name of your vSpace Management Center server.
 - b. **Note:** For tags that accept IP addresses, you can enter multiple IP addresses so long as each IP is separated by a semi-colon (;).
5. Once your entries are complete, click "OK". Your DHCP Tags are now configured. You may now exit Server Management.



The dialog box is titled "Predefined Options and Values". It contains the following fields:

- Option class:** DHCP Standard Options (selected from a dropdown menu)
- Option name:** 002 Time Offset (selected from a dropdown menu)
- Add...**, **Edit...**, **Delete** buttons
- Description:** UCT offset in seconds
- Value:**
 - Long:** 0x0 (entered in a text box)

Buttons at the bottom: OK, Cancel.